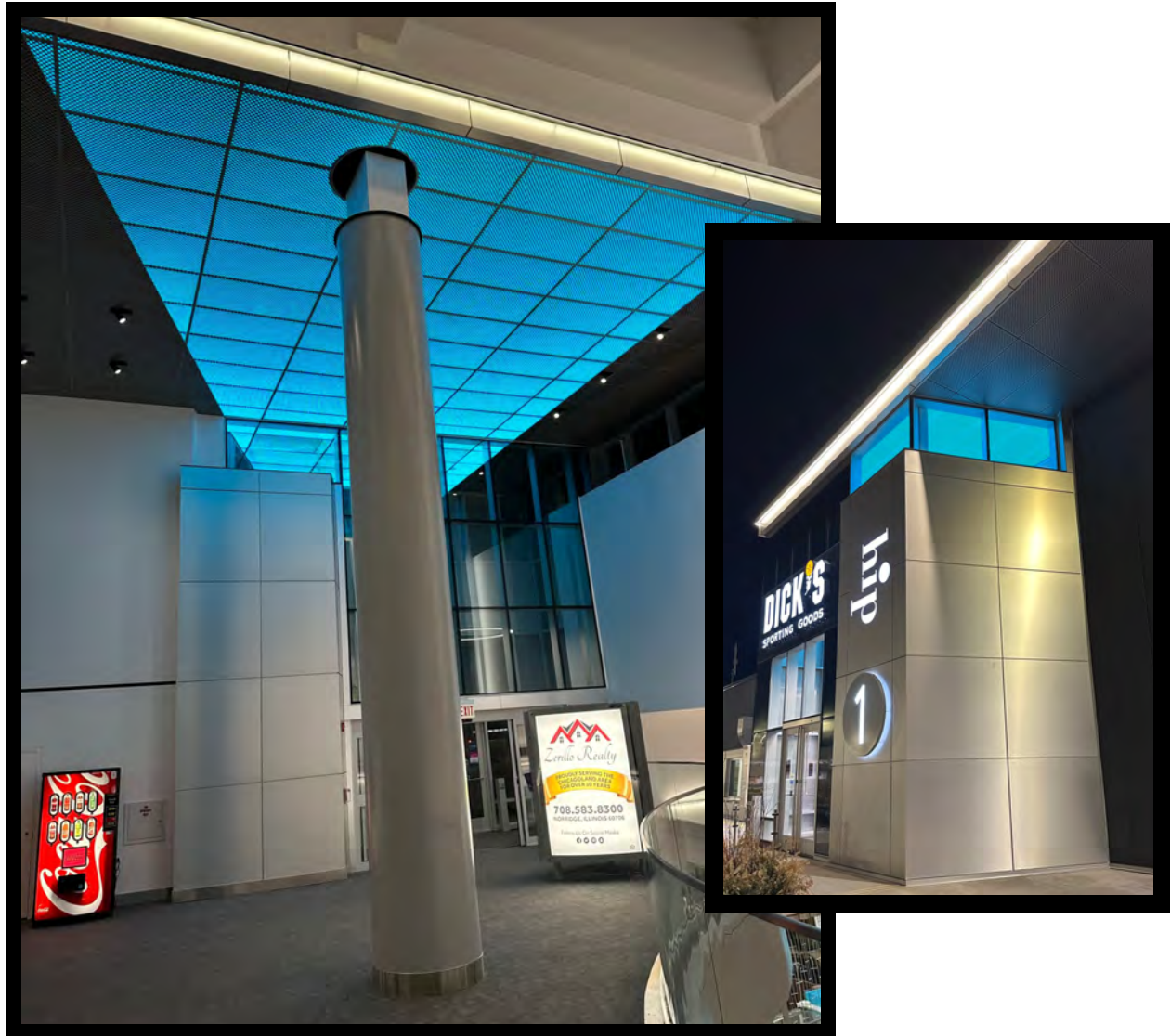


---

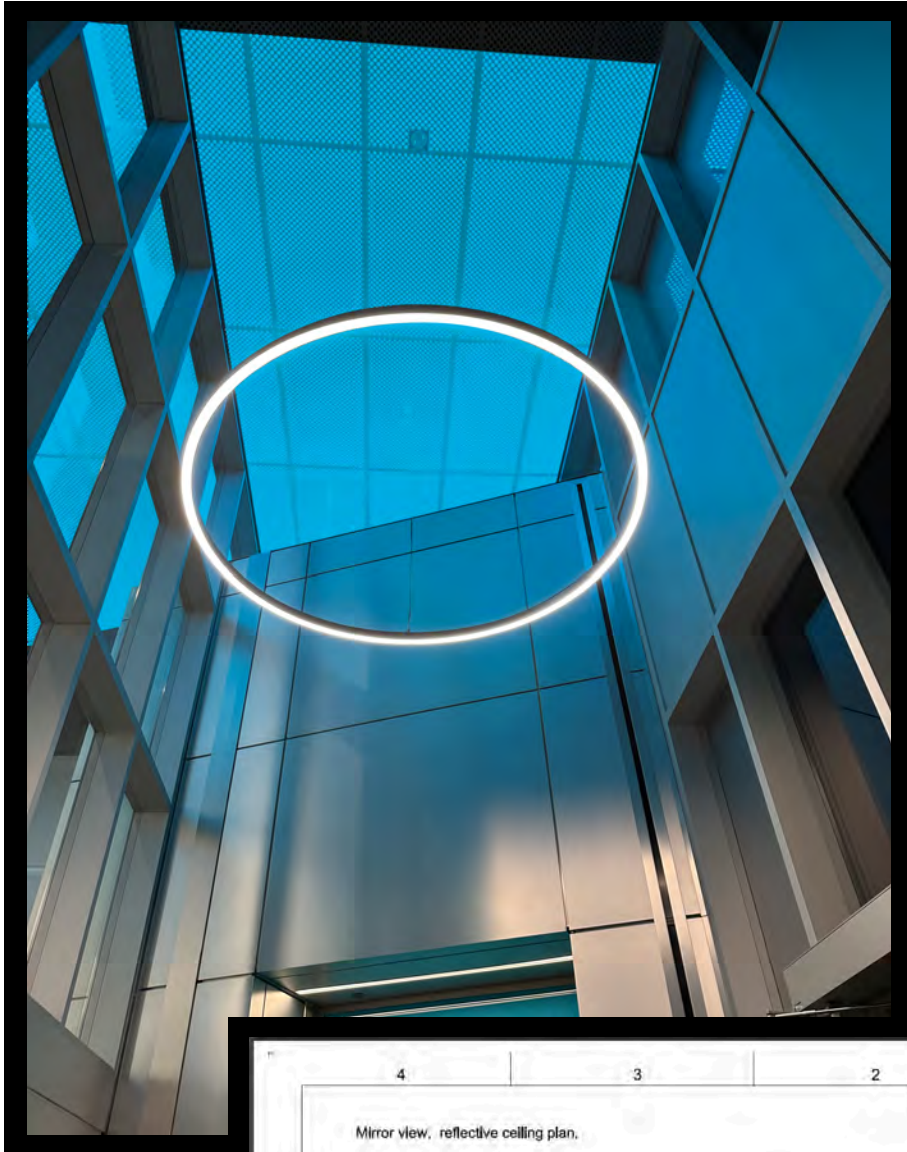
# Case Study

## Harlem Irving Plaza

### Chicago, IL

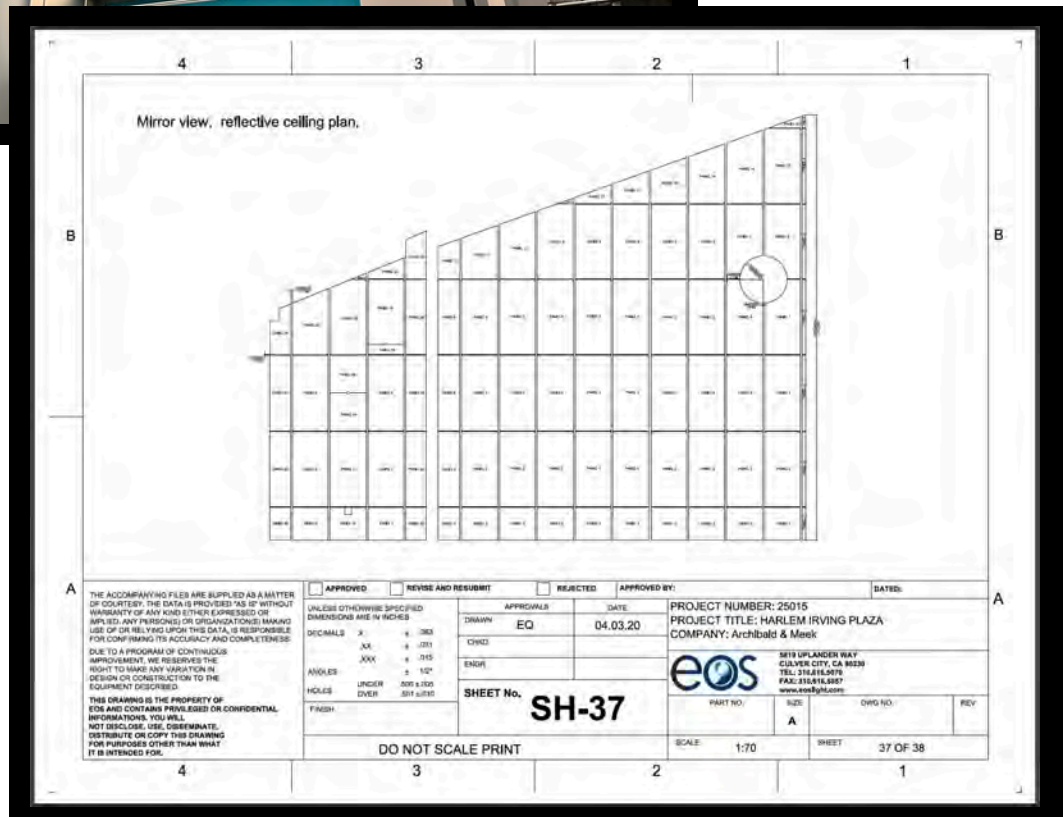


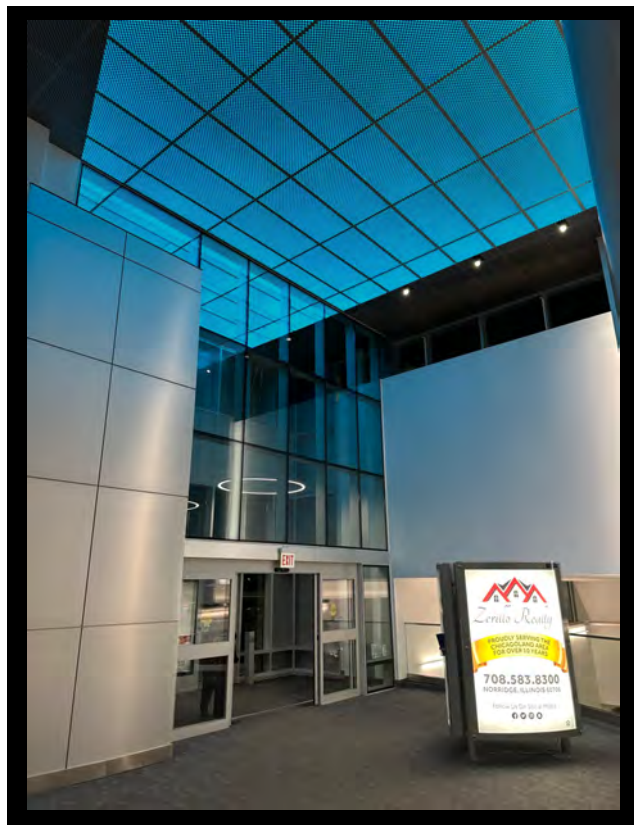
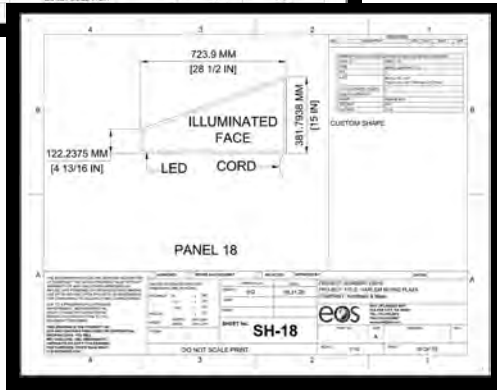
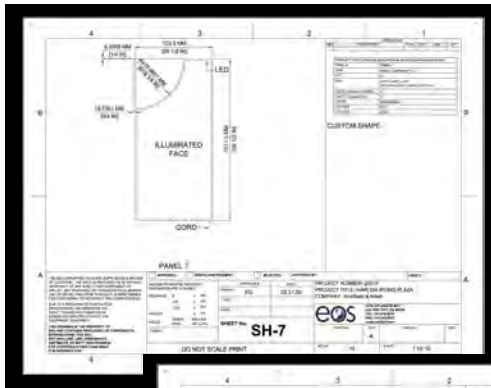
During a brief transition between anchor tenants at the Harlem Irving Plaza Shopping Center, the owner took the opportunity to revitalize this iconic, upscale Chicago-area property's atrium. The goal was to create a contemporary and visually striking reinterpretation of the space. To achieve the desired effect, EOS Light was awarded the job with its RGBW indoor LightPanels for the ceiling. These are both a centerpiece and an impression-building feature of the space, because you can not only see them upon initial entry into the building, but also through the large outside upper windows near the front doors. EOS LightPanels produce a striking environment that simply cannot be ignored.



Fitting these backlit LED panels into the pre-existing structure required the kind of attention to detail, coordination and support that EOS is well known for. The process began with measurements & approved drawings, and followed with a test run of initial LightPanels for proper fit, only to follow with the full production run of 90 overhead RGBW luminaires.

The results are self-evident in the photos!





Regarding the project's, goal and results, designer Lauri Tredinnick of Pivotal Lighting Design says:

*"The departure of an anchor tenant motivated the owner of this iconic Chicago neighborhood shopping center to revitalize, creating a new central entry and atrium. Focused on creating a 21st century re-interpretation of the existing mall, the design established a visible and intuitive new entrance. The overall project goal was to both attract new tenants and provide welcoming space for the community."*

*EOS Light Panels, located above a custom perforated metal panel ceiling, highlight the new entry. Due to existing structural conditions that minimized available recess depth, detailed coordination was required to ensure uniform backlit illumination between the odd shaped elements. Programmed to match the Center's logo, the custom RGBW edge-lit flat panel system integrates with the standard ACT ceiling panel details, is controlled via DMX, and programmed with solid color scenes for holidays and events. The EOS team was responsive in fielding questions from the design team while creating a system with high visual impact, longevity, low energy usage, and minimal maintenance."*

Let EOS accomplish the same kinds of success stories for your space! Contact us or your nearest sales rep nationwide today for quotes and orders!